

## Question Bank (I scheme)

**Name of subject: EDR**

**Subject code: 22207**

**Semester: II**

## Unit Test :II

**Course :ME**

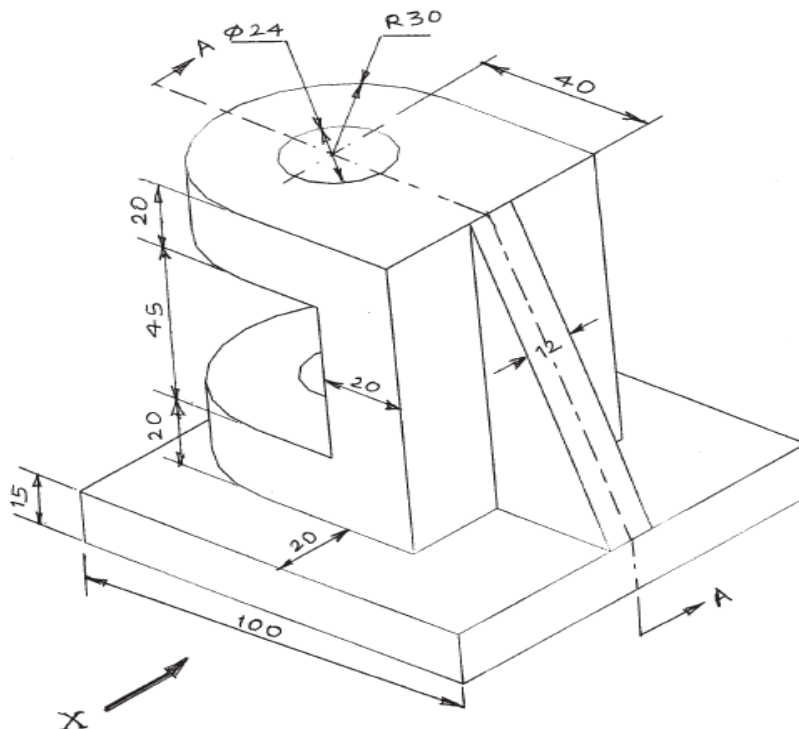
## Chapter 4. SECTIONAL ORTHOGRAPHIC VIEWS

**(7M)**

- 1. A pictorial view of the object is shown in Figure. Draw the following views (Use First angle method)**

- (i) Sectional front view along A - A.**

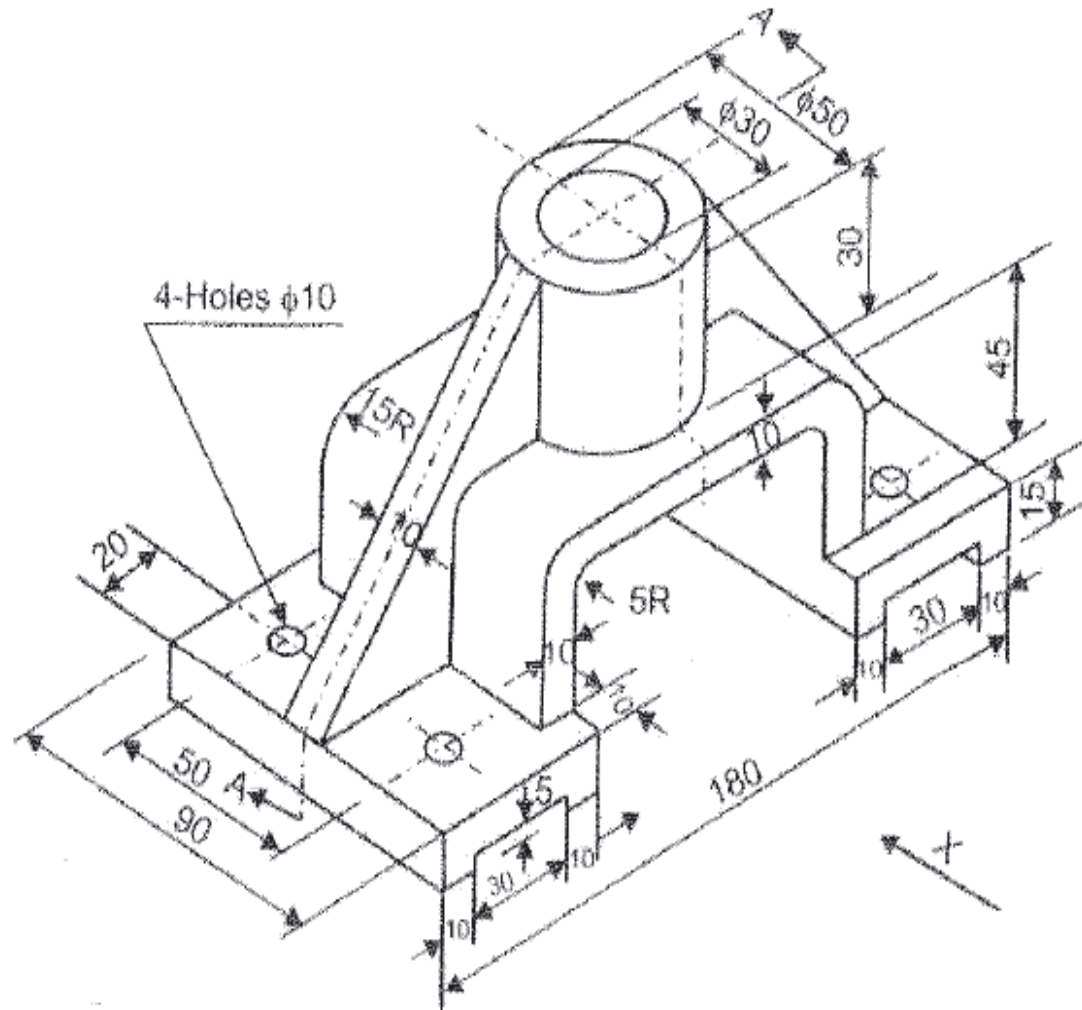
- (ii) Top view**



2. A pictorial view of the object is shown in Figure. Draw the following views (Use First angle method)

(i) Sectional front view along A - A.

(ii) Top view



(i) Sectional front view along A - A.  
(ii) Top view



## Chapter 5. MISSING VIEWS AND AUXILIARY VIEWS

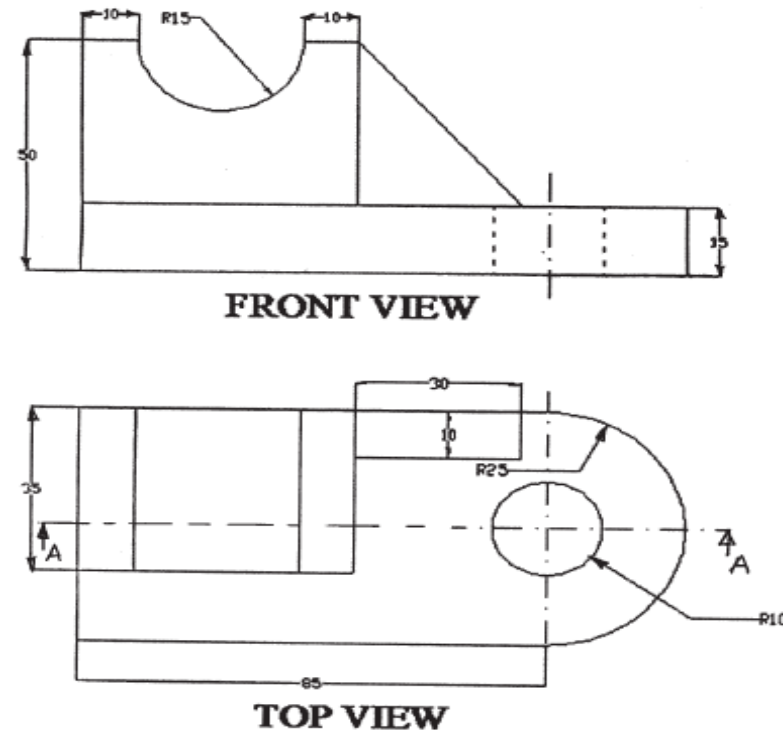
(7M)

1. Figure shows front view and top view of the object. Draw the following views of the object. (Use first angle method)

(i) Sectional front view A - A.

(ii) Top view

(iii) Right hand side view.

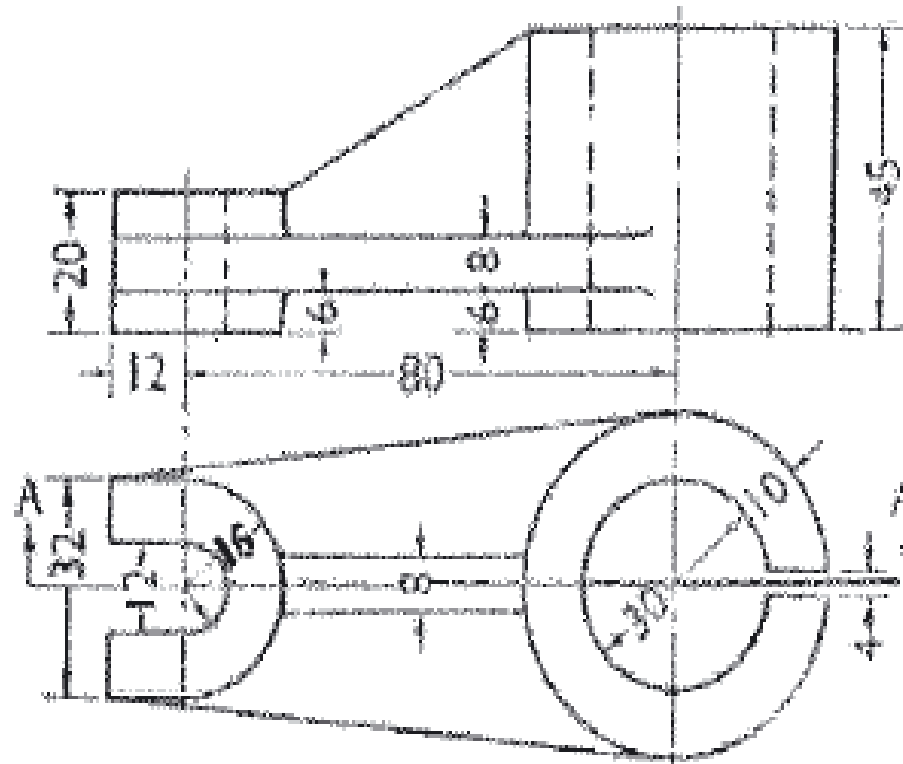


2. Figure shows front view and top view of the object. Draw the following views of the object. (Use first angle method)

(i) Sectional front view A - A.

(ii) Top view

(iii) Left hand side view

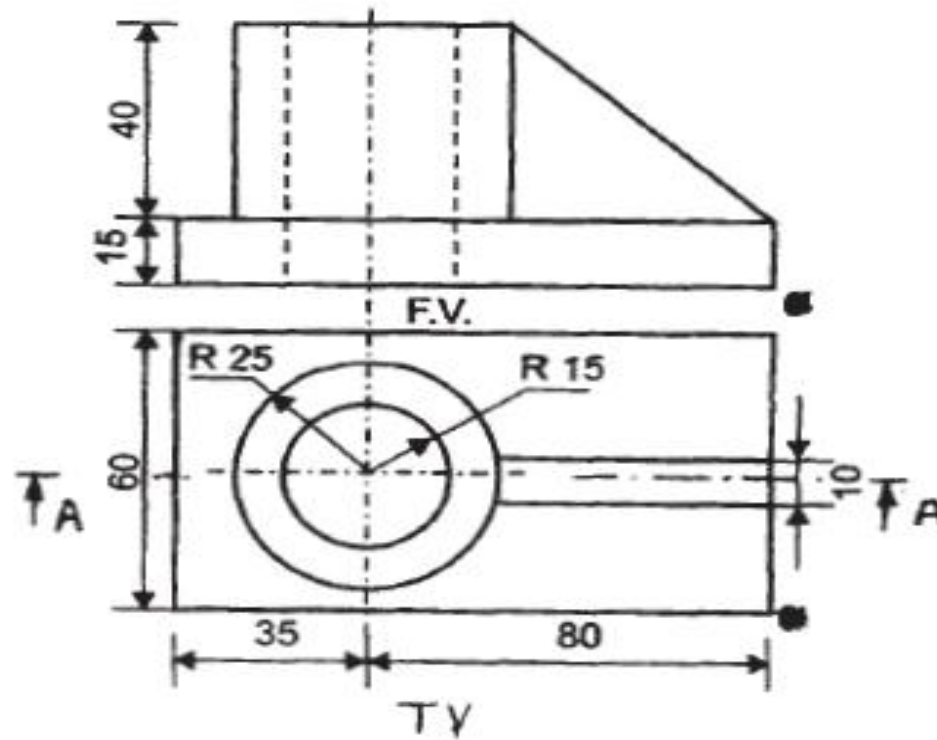


3. Figure shows front view and top view of the object. Draw the following views of the object. (Use first angle method)

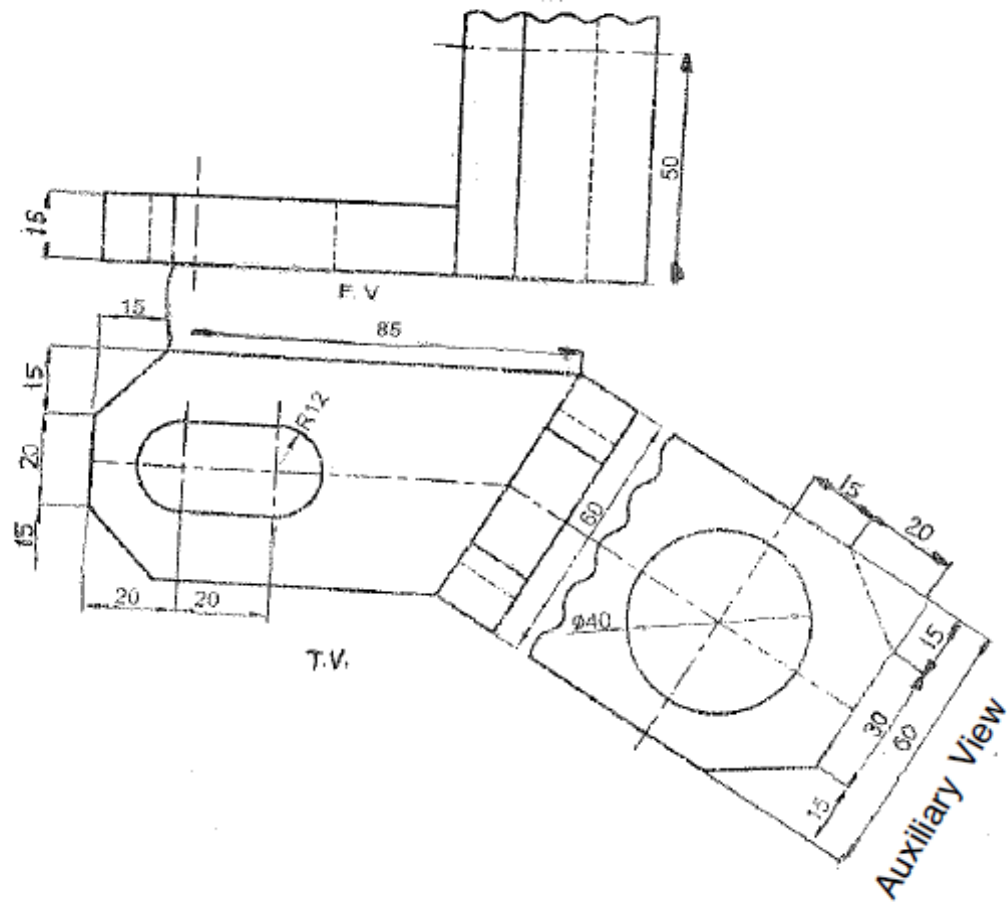
(i) Sectional front view A - A.

(ii) Top view

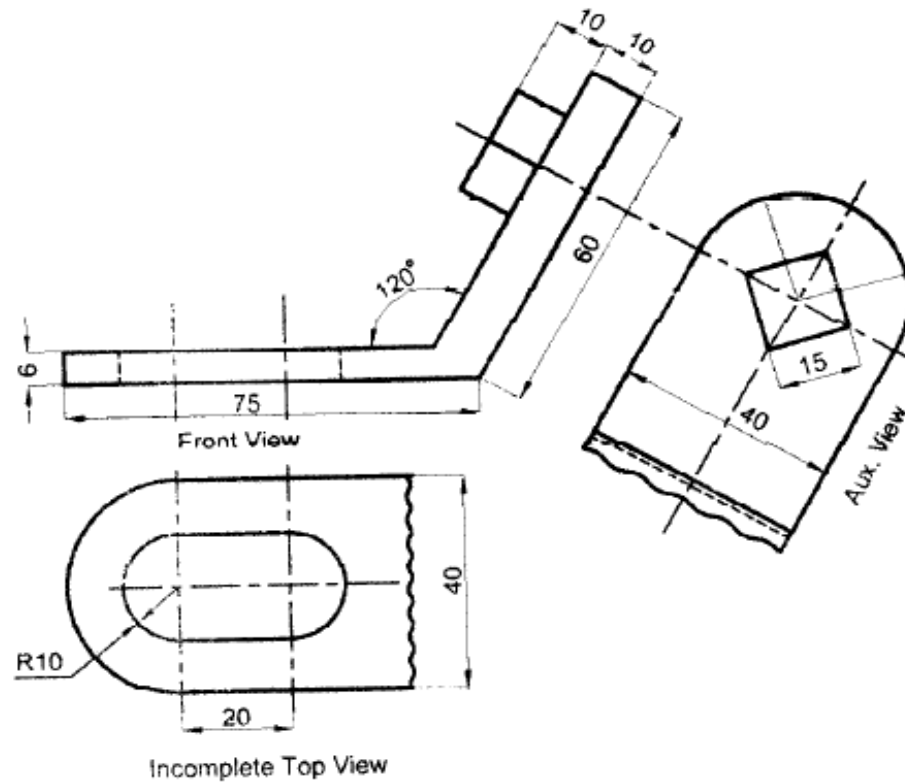
(iii) Right hand side view



4. Figure shows incomplete front view, top view and auxiliary view of bracket. Draw the given views and complete the front view.

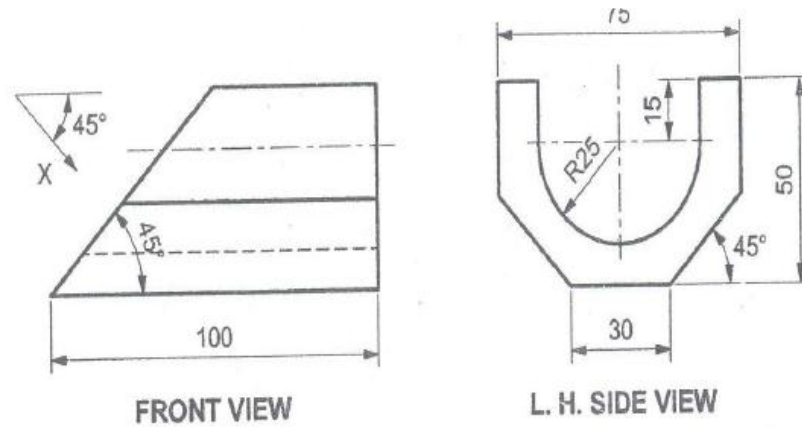


1. Figure shows incomplete top view, front view and auxiliary view. Draw the given views and complete the top view.

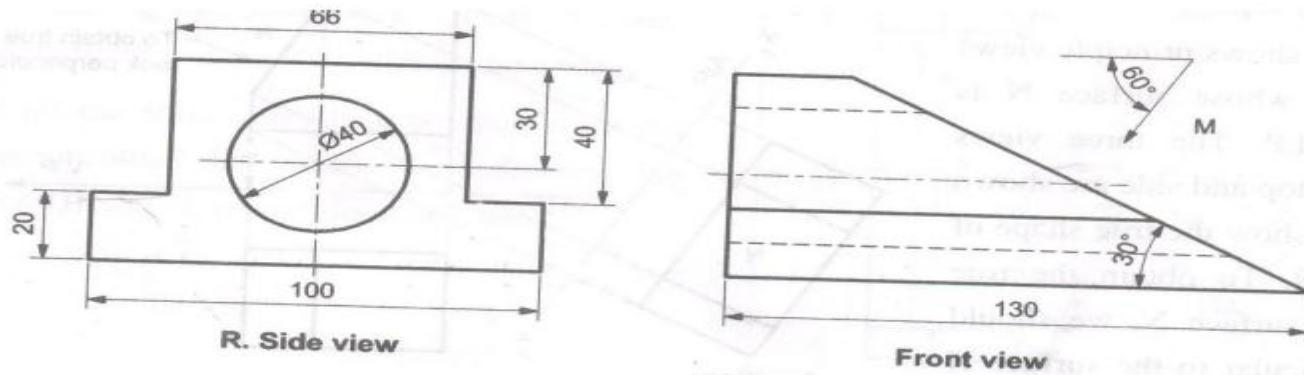




6. Figure shows front view and side view of object. Draw the given views and complete the auxiliary view.



7. Figure shows front view and side view of object. Draw the given views and complete the auxiliary view.



## **Chapter6. FREE HAND SKETCHES AND CONVENTIONAL REPRESENTATION.**

**(3M)**

**Q1. DRAW FREE HAND SKETCHES OF RIVET HEADS**

**Q2. DRAW CONVENTIONAL REPRESENTATION OF RIVET JOINTS**

- 1 SINGLE RIVETED BUTT JOINT**
- 2 DOUBLE RIVETED BUTT JOINT**
- 3 DOUBLE RIVETED BUTT JOINT WITH ZIGZAG**
- 4 SINGLE RIVETED LAP JOINT**
- 5 DOUBLE RIVETED LAP JOINT**
- 6 DOUBLE RIVETED LAP JOINT WITH ZIGZAG**

**Q3. DRAW FREE HAND SKETCHES AND CONVENTIONAL REPRESENTATION OF WELDING JOINTS AND FOUNDATION BOLT**

- 1 FILLET WELD**
- 2 SPOT WELD**
- 3 DOUBLE J BUTT WELD**
- 4 SEAM WELD**
- 5 EYE FOUNDATION BOLT**
- 6 LEWIS FOUNDATION BOLT**

**Q4. DRAW FREE HAND SKETCHES OF PULLEY AND COUPLING**

- 1 MUFF COUPLING**
- 2 PROTECTED FLANGE COUPLING**
- 3 FLEXIBLE FLANGE COUPLING**
- 4 UNIVERSAL JOINT COUPLING**
- 5 PULLEY**
- 6 V BELT**

**Q5. DRAW CONVENTIONAL REPRESENTATION OF COMMON ENGINEERING MATERIAL**

- 1 STEEL/CAST IRON**
- 2 CONCRETE**
- 3 GLASS**
- 4 PACKAGING MATERIAL**
- 5 WATER/LIQUIDS**
- 6 WOOD**